

Republic of the Philippines  
National Capital Region

# City of Muntinlupa

Local Civil Registry Office

## 2021 Civil Registration Report

By:

**Atty. Harley L. Padolina Jr.**  
City Civil Registrar

# Table of Content

<b>Certificate of Live Birth Registration</b>	<b>3</b>
<hr/>	
Total Number of Live Birth Registration for the year disaggregated by Mother’s residency	3
Birth Registration disaggregated by Month, Gender & Residency of the Mother	3
Birth Registration by Status	4
Birth Registration disaggregated by Marriage Status of Parents	5
Birth Registration disaggregated by Attendant at Birth	5
Birth Registration by Place of Birth	6
Birth Registration disaggregated by Birth weight	6
Birth By Maternal Age	7
Birth by Barangay	8
Teenage Birth By Barangay	9
Teenage Birth By Month	10
Comparative Trend Data on Timely vs. Delayed from previous 5 years (2017 to 2021)	11
Comparative Trend Data on Total number of Registered Birth by Sex from the previous 5 years (2017 - 2021)	12
<b>Certificate of Death Registration</b>	<b>13</b>
<hr/>	
Death Registration by Registration status	13
Death Registration disaggregated by gender	14
Total Number of Death Registration for the year 2021 disaggregated by residency	15
Total Number of Death by Barangay residency	15
Total Number of Death by Barangay residency, Sex	16
Death Registration disaggregated by Age Group, Sex	17
Death Registration disaggregated by Disposal	18
Death Registration disaggregated by Permit Type	18
Funeral Service Provider	19
Comparative Trend Data on Death Registration disaggregated by Gender from previous 5 years (2017 to 2021)	20
<b>Certificate of Marriage Registration</b>	<b>21</b>
<hr/>	
Marriage Registration disaggregated by Month	21
Marriage Registration disaggregated by Registration Status	22
Marriage Registration disaggregated by Solemnizing officer certification	22
Marriage Registration by Place of Wedding	23
Marriage Registration disaggregated by AGE of Contracting Party	24
Marriage Registration disaggregated by Residency	26
Marriage Registration disaggregated by Barangay	27
Comparative Trend data on Marriage Registration from 2017 to 2021	28

## CERTIFICATE OF LIVE BIRTH REGISTRATION

### 1. Total Number of Live Birth Registration for the year 2021 disaggregated by Mother's residency

	Count
Muntinlupa Resident	5889
Non-Muntinlupa Resident	844
<b>Total</b>	<b>6733</b>

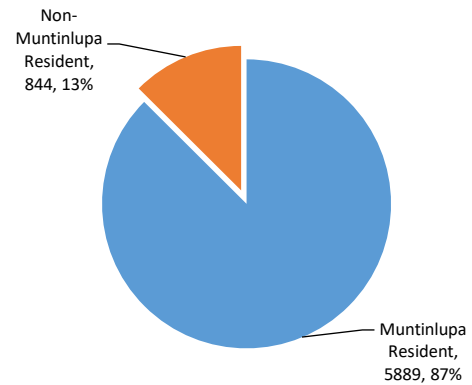


Figure 1.0 Muntinlupa Resident and Non-Resident

### 2. Birth Registration disaggregated by Month, Gender & Residency of the Mother

Month	Resident		Non-Resident		Total		Count
	Male	Female	Male	Female	Male	Female	
January	277	251	35	38	312	289	601
February	226	220	40	34	266	254	520
March	248	214	50	29	298	243	541
April	162	155	26	25	188	180	368
May	218	210	22	29	240	239	479
June	275	226	27	26	302	252	554
July	265	241	34	27	299	268	567
August	226	202	19	21	245	223	468
September	235	228	44	55	279	283	562
October	293	258	37	50	330	308	638
November	289	291	46	42	335	333	668
December	339	340	51	37	390	377	767
Sub-total	3053	2836	431	413	3484	3249	<b>6733</b>
<b>Total</b>	<b>5889</b>		<b>844</b>		<b>6733</b>		



Figure 2.0 Birth by Gender

### 3. Birth Registration by Status

Month	Timely	Delayed	Count
January	412	189	601
February	318	202	520
March	338	203	541
April	294	74	368
May	384	95	479
June	408	146	554
July	429	138	567
August	393	75	468
September	503	59	562
October	518	120	638
November	515	153	668
December	525	242	767
<b>Total</b>	<b>5037</b>	<b>1696</b>	<b>6733</b>

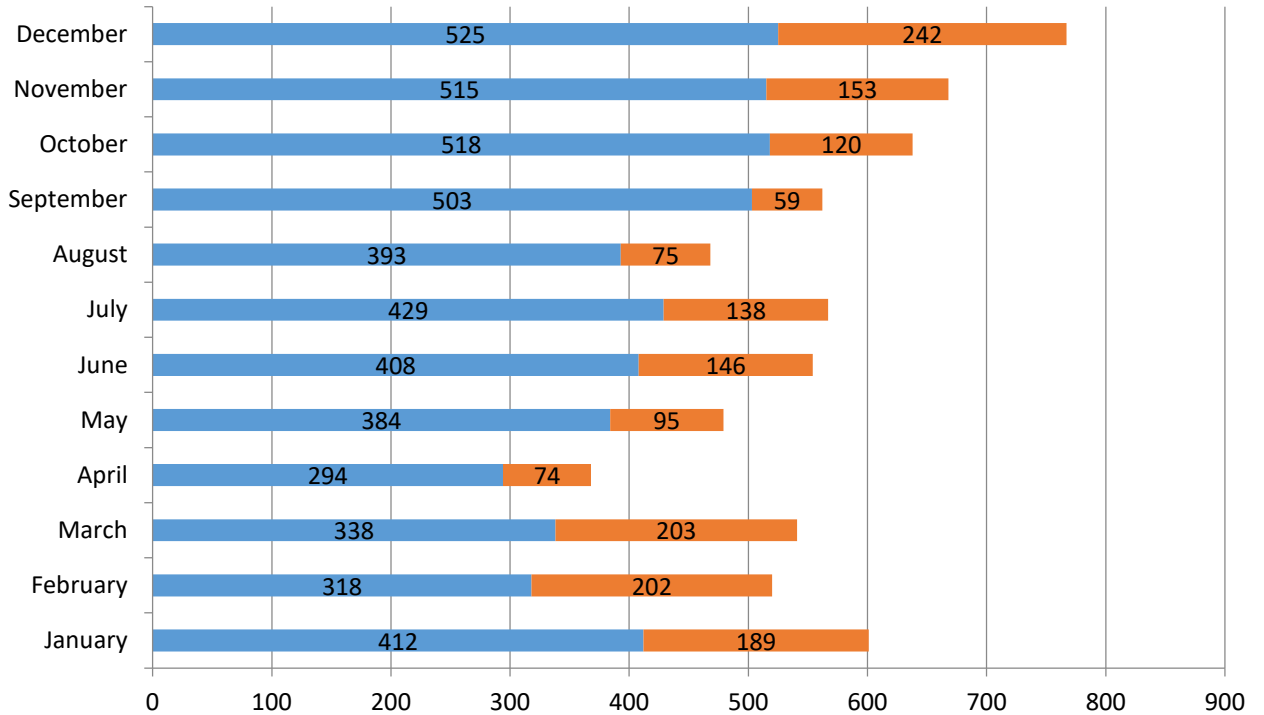


Figure 3.0 Monthly Birth Registration

Note: status – Timely Registrations are birth registrations within 30 days of reglementary period from the date of Birth; Delayed – beyond reglementary period.

#### 4. Birth Registration disaggregated by Marriage Status of Parents

Status	Count
Married	2086
Single Mother	257
Not Married	4375
Don't Know	15
<b>Total</b>	<b>6733</b>

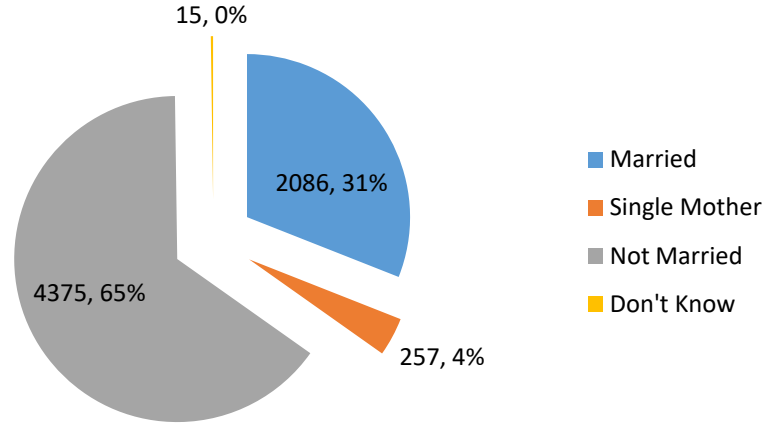


Figure 4.0 Birth Registration by Marriage status of parent

#### 5. Birth Registration disaggregated by Attendant at Birth

Attendant	Count
Physician	4219
Nurse	5
Midwife	1642
Hilot	846
Others	21
<b>Total</b>	<b>6733</b>

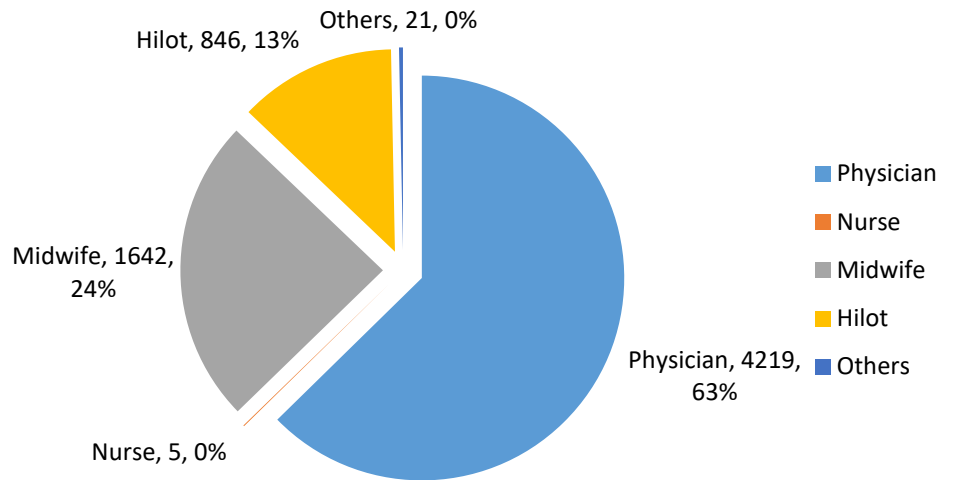


Figure 5.0 Birth Registration by Attendant

## 6. Birth Registration by Place of Birth

Facility	Count
Hospital	3600
Lying-In	2007
Home	1053
Others	73
<b>Total</b>	<b>6733</b>

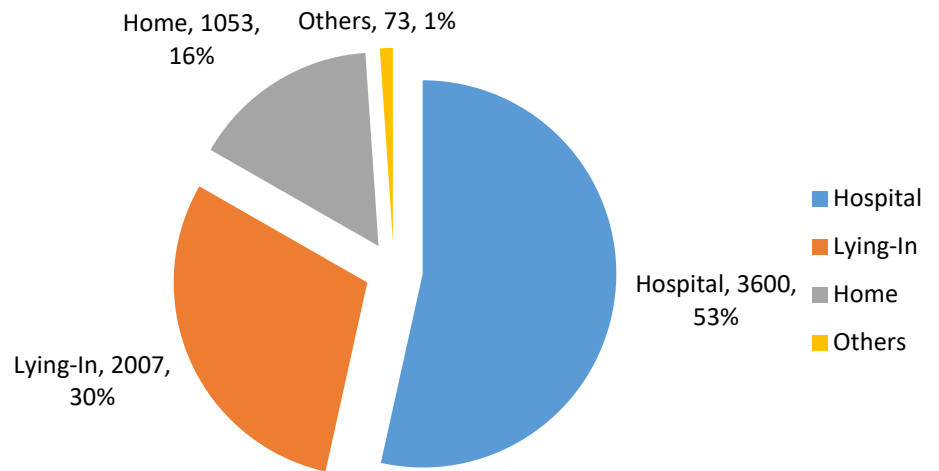


Figure 6.0 Birth Registrations by Place of Birth

## 7. Birth Registration disaggregated by Birth weight

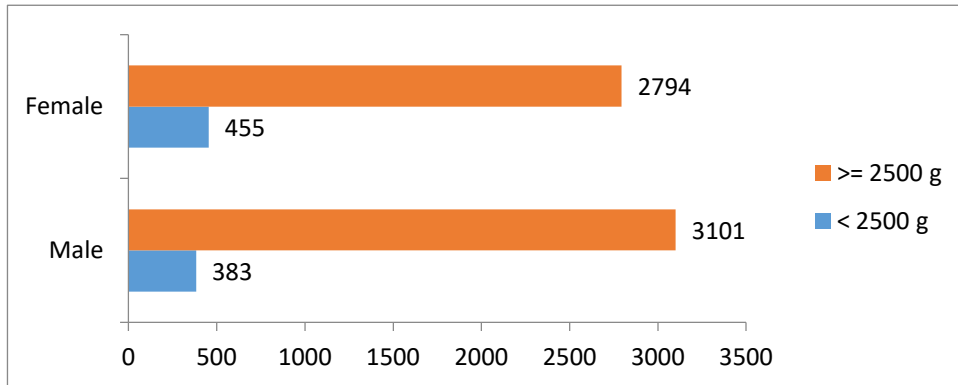


Figure 7.0 Birth Registration by Birth weight

Weight	Male	Female	Count
< 2500	383	455	838
>= 2500	3101	2794	5895
<b>Total</b>	<b>3484</b>	<b>3249</b>	<b>6733</b>

## 8. Birth By Maternal Age

Age Group	Resident*	Non-resident	Count
13-14	3	2	5
15-17	232	10	242
18-21	823	31	854
22-25	1279	94	1373
26-30	1639	211	1850
31-35	1134	288	1422
36-40	607	165	772
41-45	153	41	194
46-50	16	2	18
Not Stated	3	0	3
<b>Total</b>	<b>5889</b>	<b>844</b>	<b>6733</b>

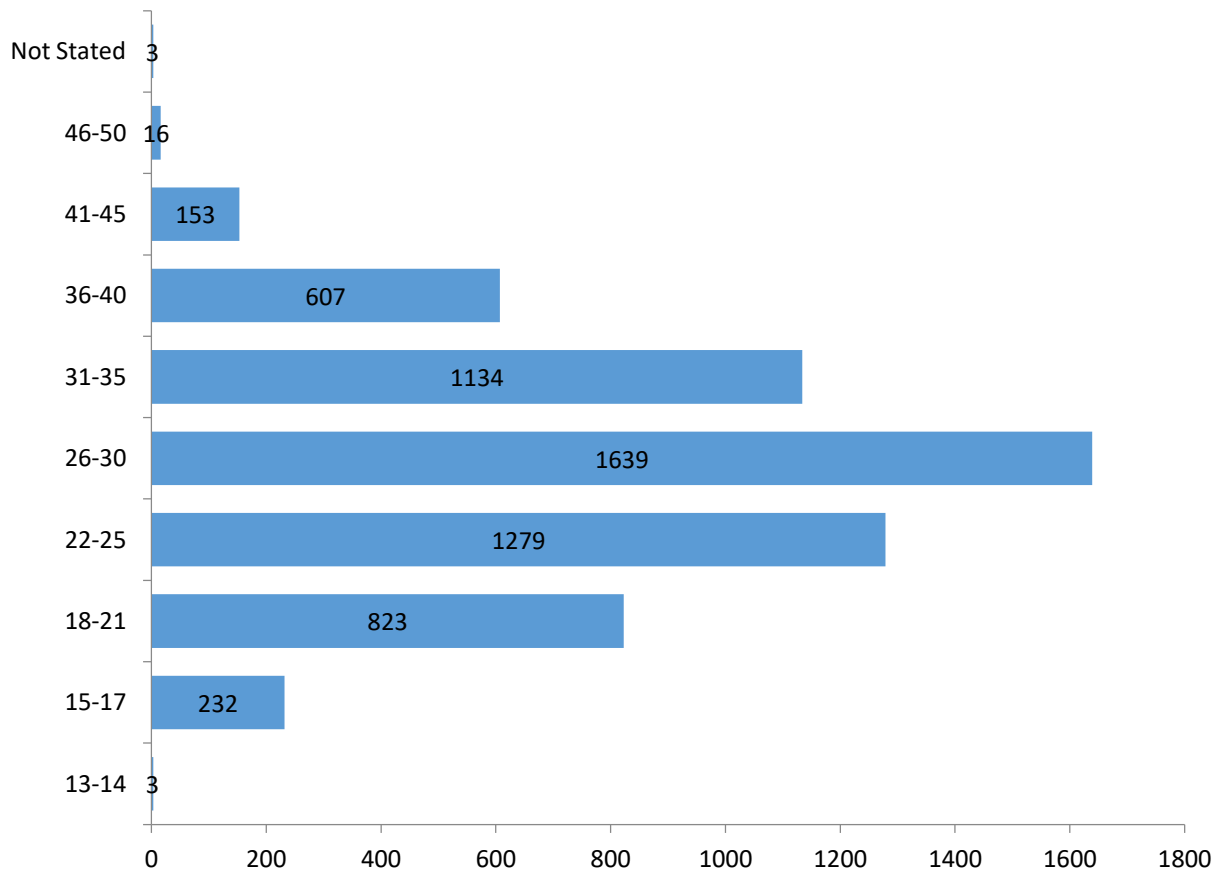


Figure 8.0 Birth By Maternal Age

### 9. Birth Registration by Barangay

Barangay	Count	%
Tunasan	613	10.41
Poblacion	1315	22.33
Putatan	1159	19.68
Bayanan	523	8.88
Alabang	932	15.83
Ayala Alabang	10	0.17
Buli	100	1.70
Cupang	608	10.32
Sucac	629	10.68
<b>Total</b>	<b>5889</b>	<b>100</b>

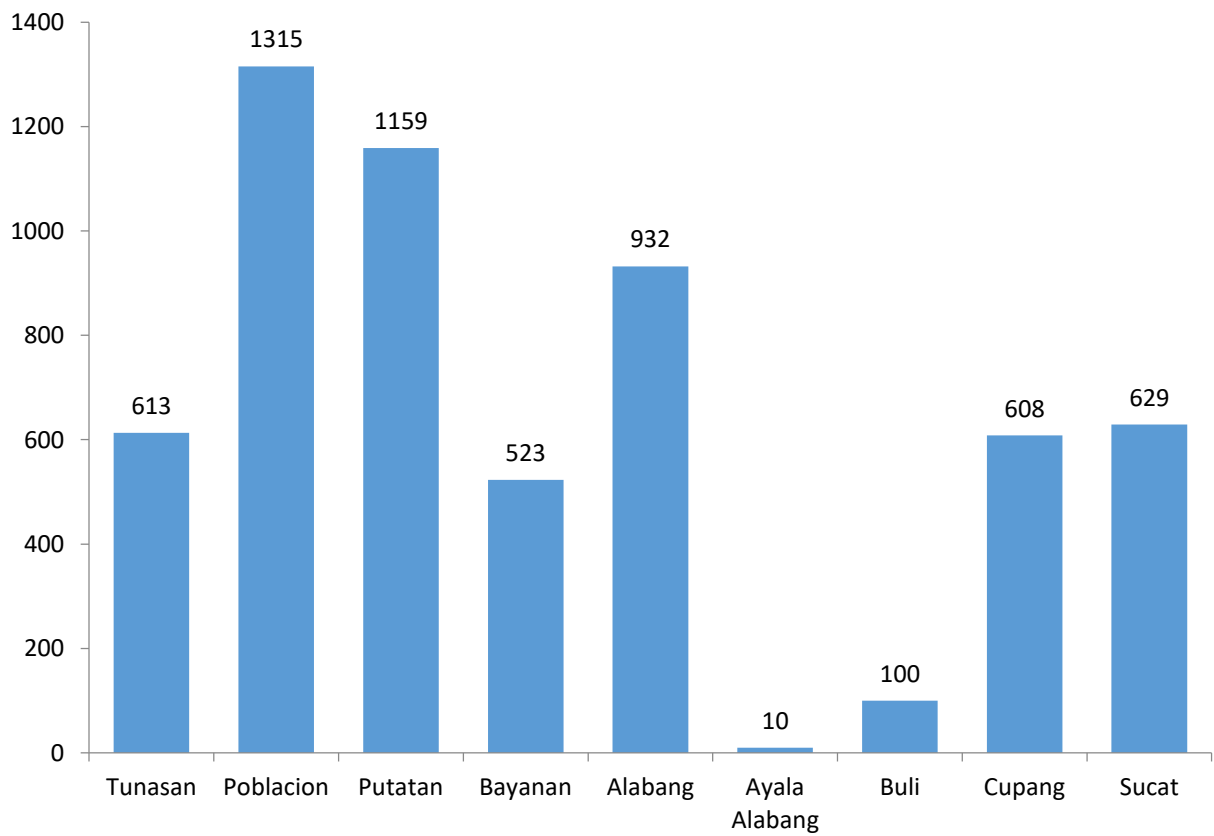


Figure 9.0 Birth by Barangay



## 10. Teenage Birth By Barangay

Age	Tunasan	Poblacion	Putatan	Bayanan	Alabang	Ayala Alabang	Buli	Cupang	Sucac	Count
14	0	1	1	0	1	0	0	0	0	3
15	1	10	8	2	2	0	0	5	1	29
16	3	23	11	8	13	0	0	12	8	78
17	13	35	29	7	13	0	0	15	13	125
18	10	34	33	15	10	0	2	24	19	147
19	19	50	29	16	38	0	5	20	18	195
<b>Total</b>	<b>46</b>	<b>153</b>	<b>111</b>	<b>48</b>	<b>77</b>	<b>0</b>	<b>7</b>	<b>76</b>	<b>59</b>	<b>577</b>

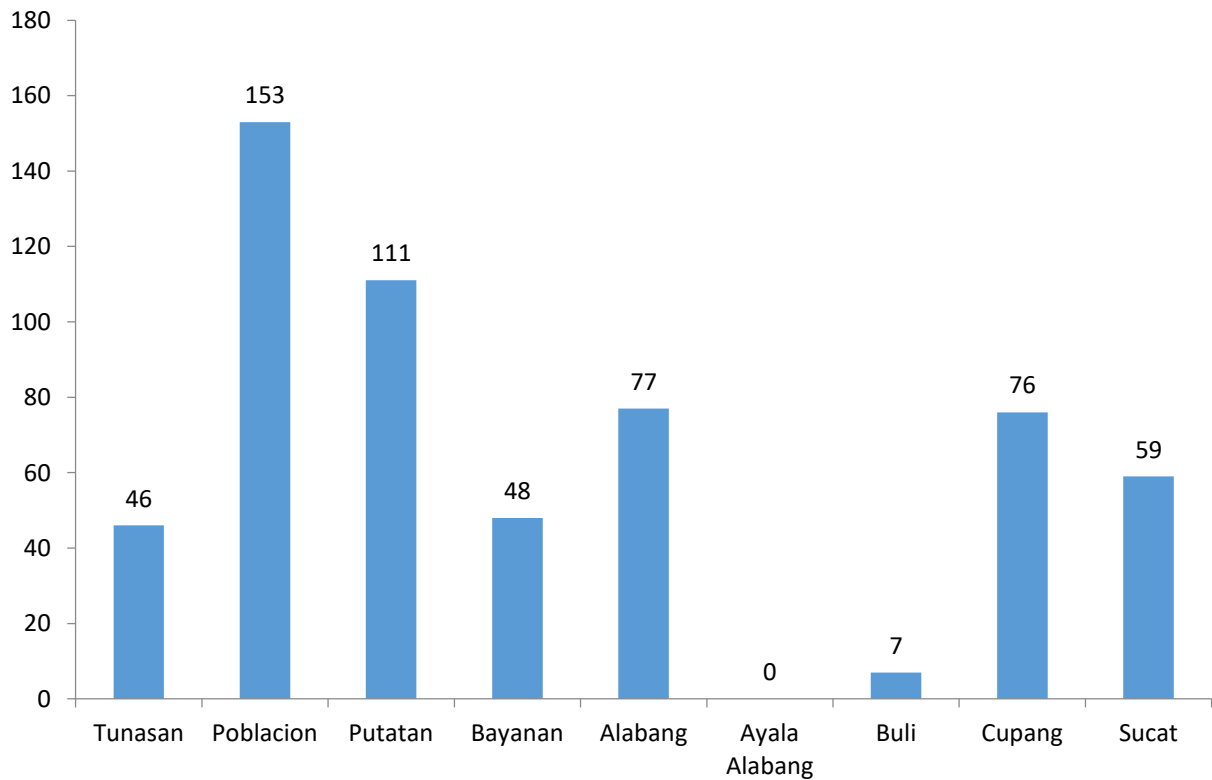


Figure 10. Birth Registration by Teenage Birth

## 11. Teenage Birth by Month

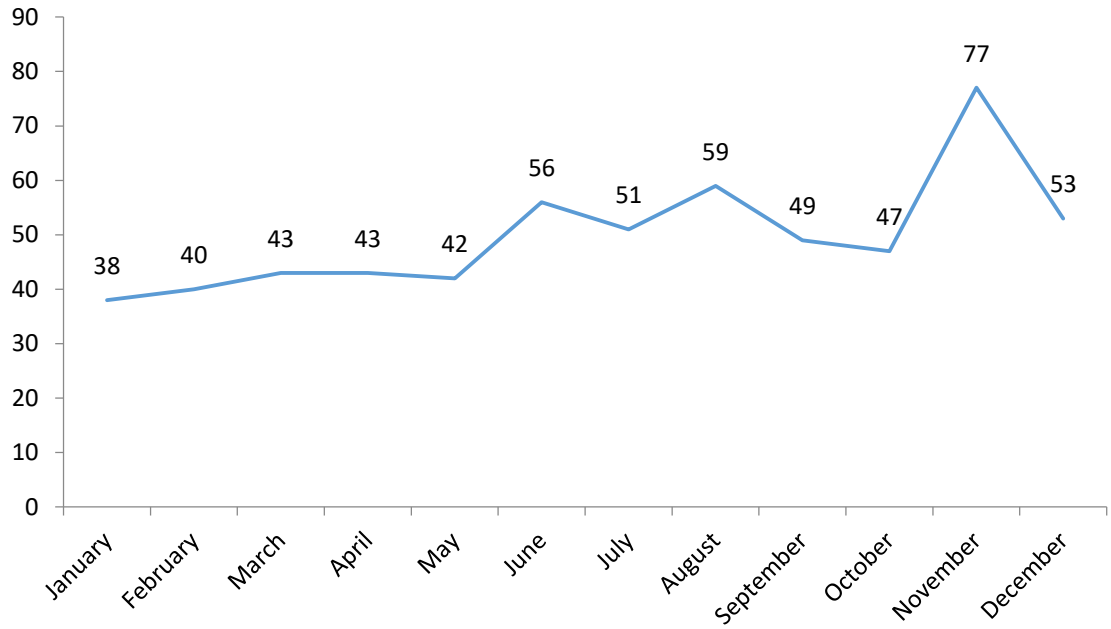


Figure 11.0 Teenage Birth by Month

Month	Count
January	38
February	40
March	43
April	43
May	42
June	56
July	51
August	59
September	49
October	47
November	77
December	53
<b>Total</b>	<b>598</b>

Note: The above data shows the total teenage pregnancy by month and not disaggregated by residency

**12. Comparative Trend Data on Timely vs. Delayed from previous 5 years (2017 to 2021)**

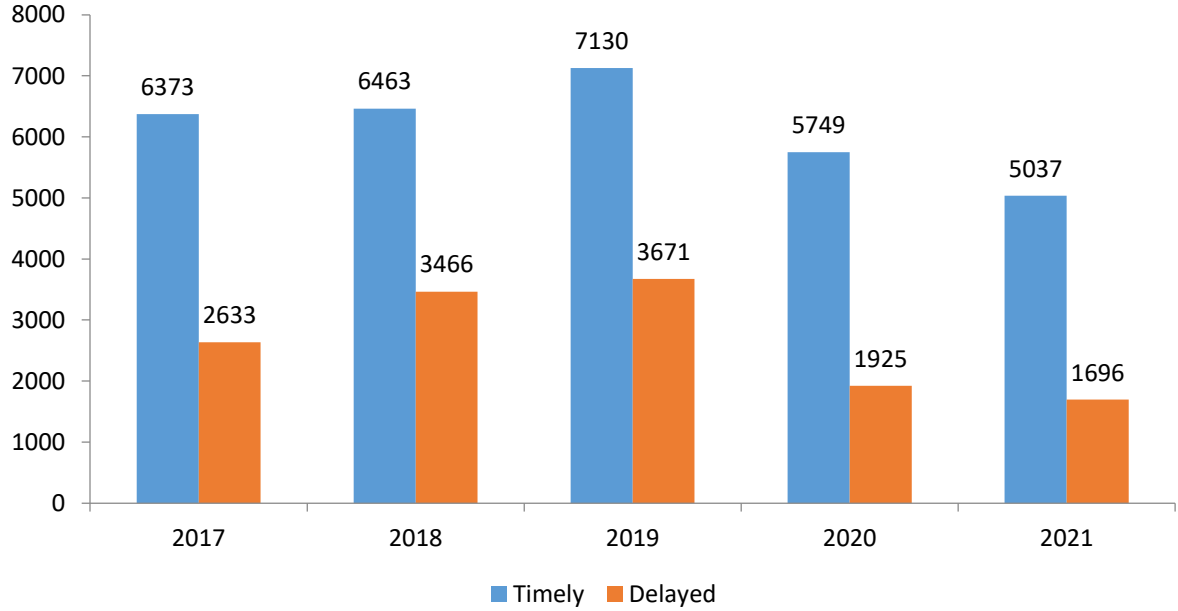


Figure 12.0 Timely vs. Delayed Registration from the last 5 Years

Year	Timely	Delayed	Count
2017	6373	2633	9006
2018	6463	3466	9929
2019	7130	3671	10801
2020	5749	1925	7674
2021	5037	1696	6733
<b>Total</b>	<b>30752</b>	<b>13391</b>	<b>44143</b>

**13. Comparative Trend Data on Total number of Registered Birth by Sex from the previous 5 years (2017 -2021)**

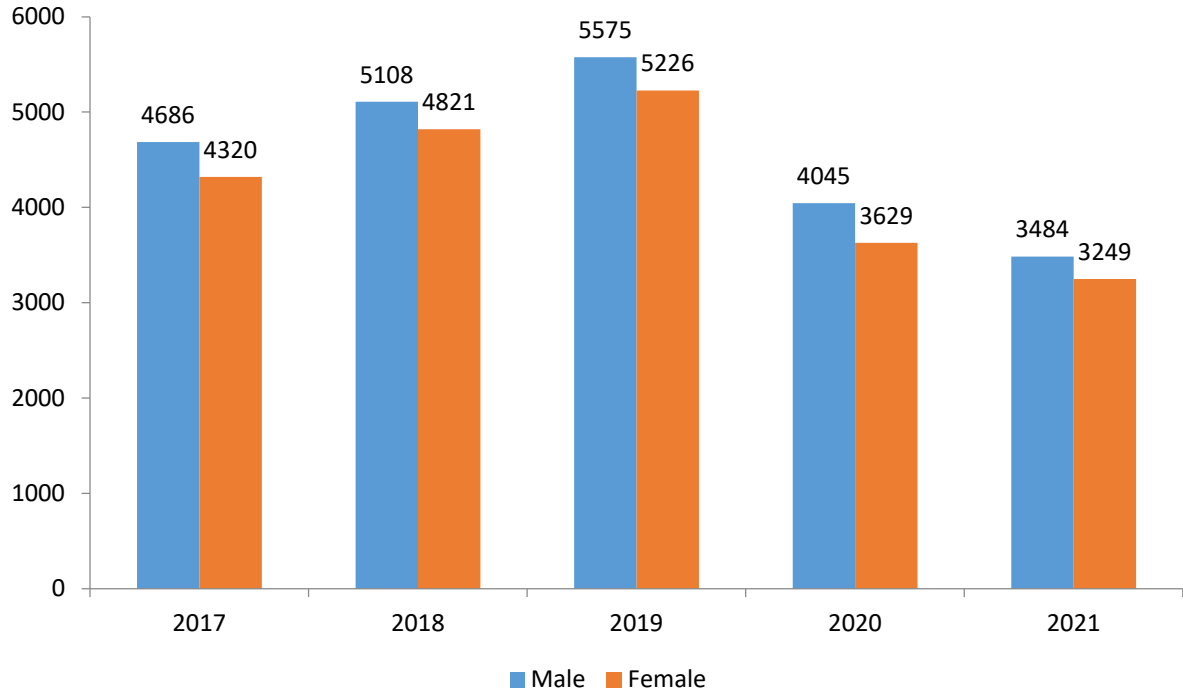


Figure 13.0 Birth Registrations by Sex from the last 5 years

Year	Male	Female	Count
2017	4686	4320	9006
2018	5108	4821	9929
2019	5575	5226	10801
2020	4045	3629	7674
2021	3484	3249	6733
<b>Total</b>	<b>22898</b>	<b>21245</b>	<b>44143</b>

# CERTIFICATE OF DEATH REGISTRATION

## 1. Death Registration by Registration status

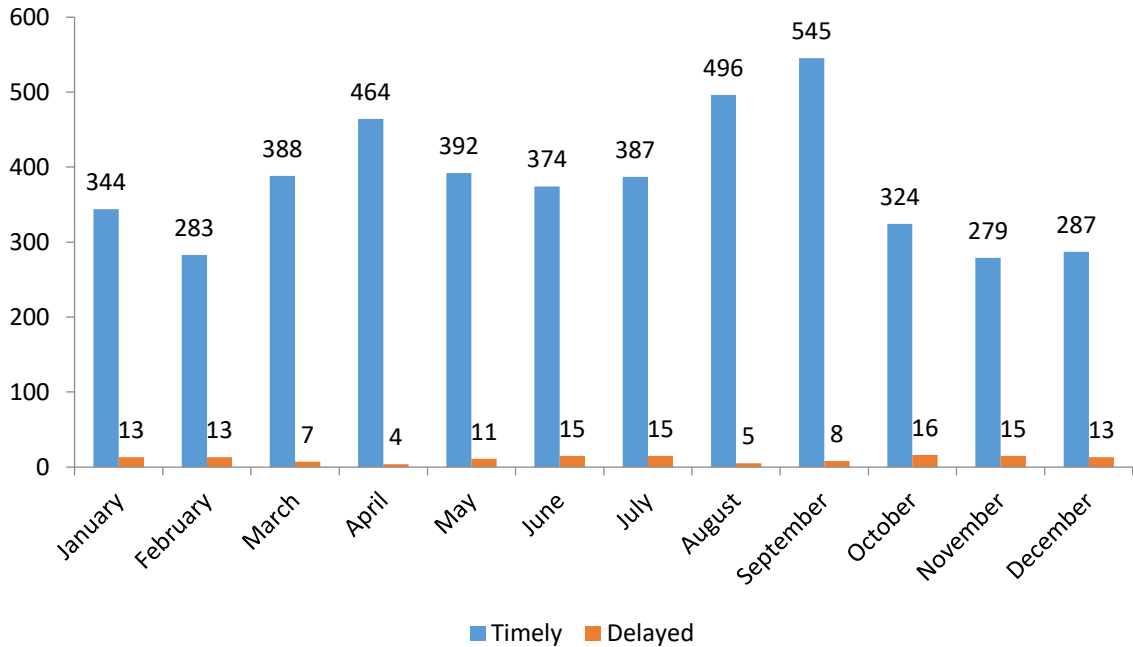


Figure 14.0 Death by Registration Status

Month	TIMELY	DELAYED	COUNT
January	344	13	357
February	283	13	296
March	388	7	395
April	464	4	468
May	392	11	403
June	374	15	389
July	387	15	402
August	496	5	501
September	545	8	553
October	324	16	340
November	279	15	294
December	287	13	300
<b>Total</b>	<b>4563</b>	<b>135</b>	<b>4698</b>

Note: status – Timely Registrations are registrations within 30 days of reglementary period from the date of Death; Delayed – beyond reglementary period.

## 2. Death Registration disaggregated by gender

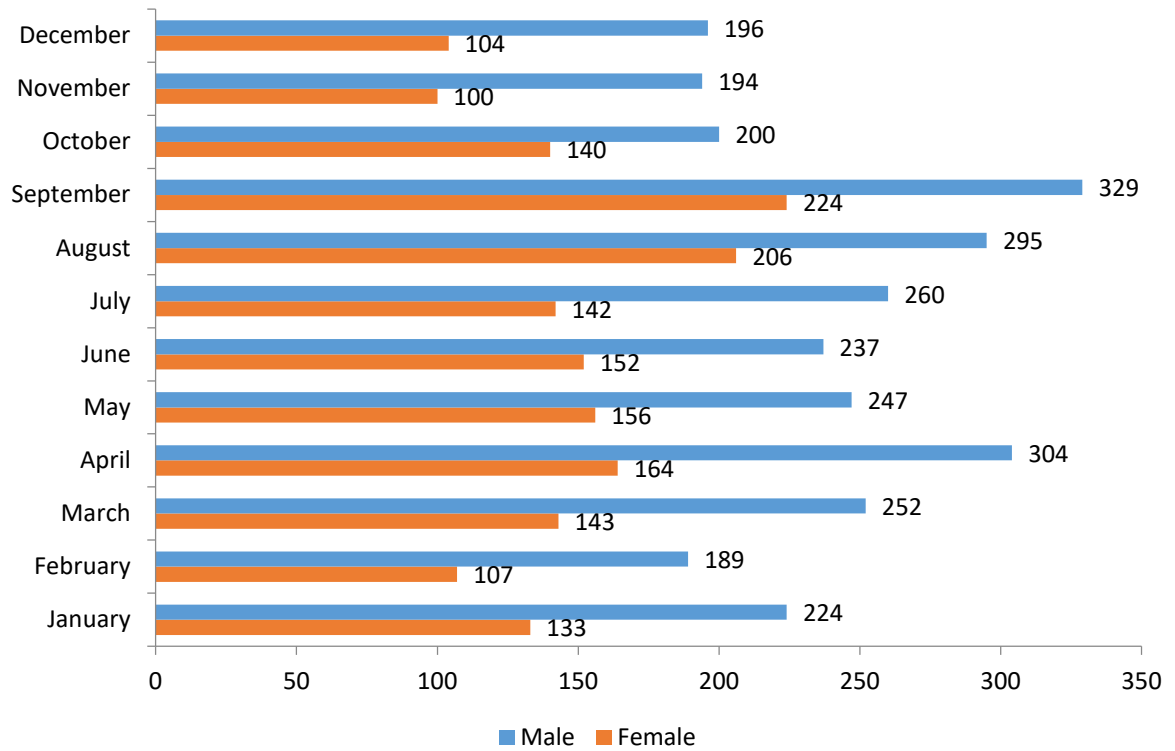


Figure 15.0 Death Registration disaggregated by Gender

Month	Male	Female	Count
January	224	133	357
February	189	107	296
March	252	143	395
April	304	164	468
May	247	156	403
June	237	152	389
July	260	142	402
August	295	206	501
September	329	224	553
October	200	140	340
November	194	100	294
December	196	104	300
<b>Total</b>	<b>2927</b>	<b>1771</b>	<b>4698</b>

### 3. Total Number of Death Registration for the year 2021 disaggregated by residency

Place of residency of the deceased	Count
Resident	3379
Non- Resident	1319
<b>Total</b>	<b>4698</b>

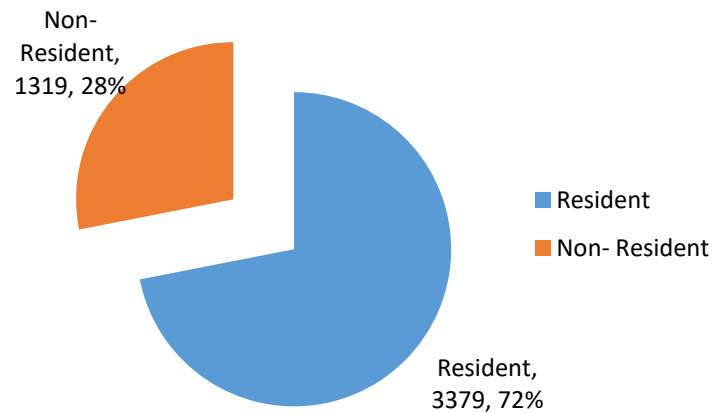


Figure 16.0 Death disaggregated by residency

### 4. Total Number of Death by Barangay residency

BARANGAY	Count	%
ALABANG	466	13.79
AYALA ALABANG	64	1.89
BAYANAN	302	8.94
BULI	76	2.25
CUPANG	307	9.09
POBLACION	746	22.08
PUTATAN	728	21.54
SUCAT	283	8.38
TUNASAN	407	12.04
<b>Total</b>	<b>3379</b>	<b>100%</b>

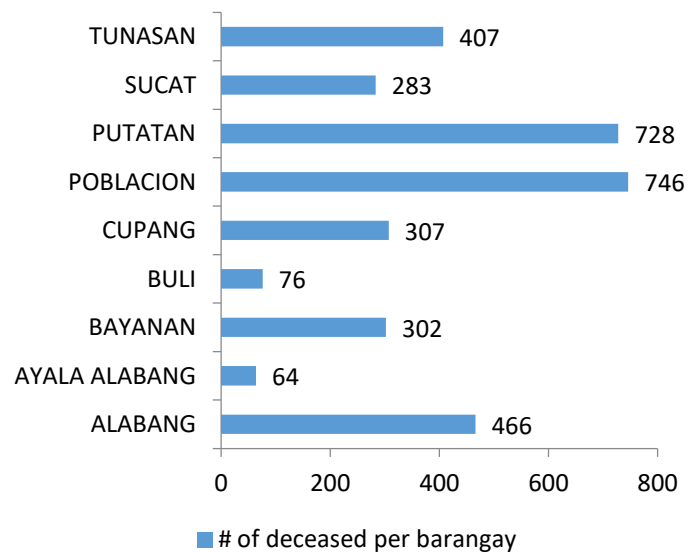


Figure 17.0 Death disaggregated by barangay

## 5. Total Number of Death by Barangay residency, Sex

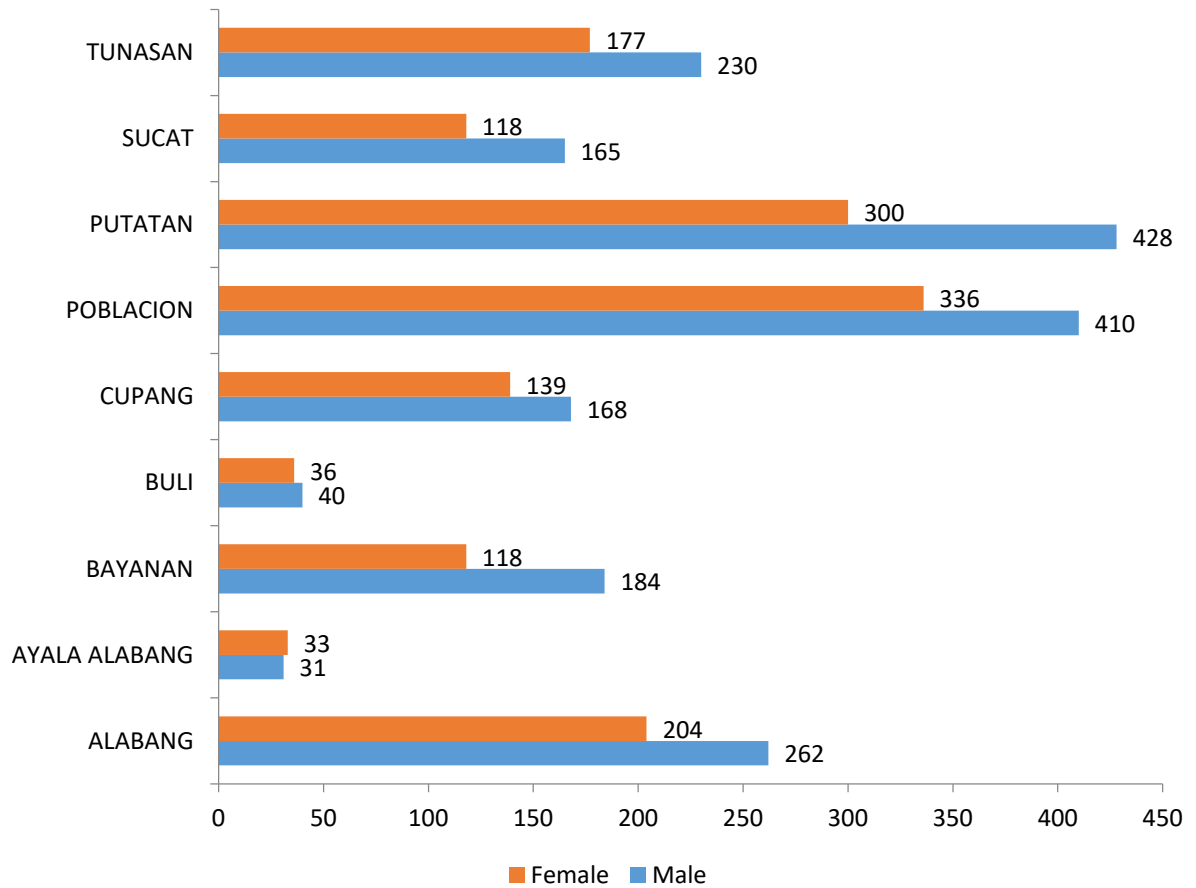


Figure 18.0 Death Registration by barangay, gender

BARANGAY	MALE	FEMALE	SUB-TOTAL
ALABANG	262	204	466
AYALA ALABANG	31	33	64
BAYANAN	184	118	302
BULI	40	36	76
CUPANG	168	139	307
POBLACION	410	336	746
PUTATAN	428	300	728
SUCAT	165	118	283
TUNASAN	230	177	407
<b>TOTAL</b>	<b>1918</b>	<b>1461</b>	<b>3379</b>



## 6. Death Registration disaggregated by Age Group, Sex

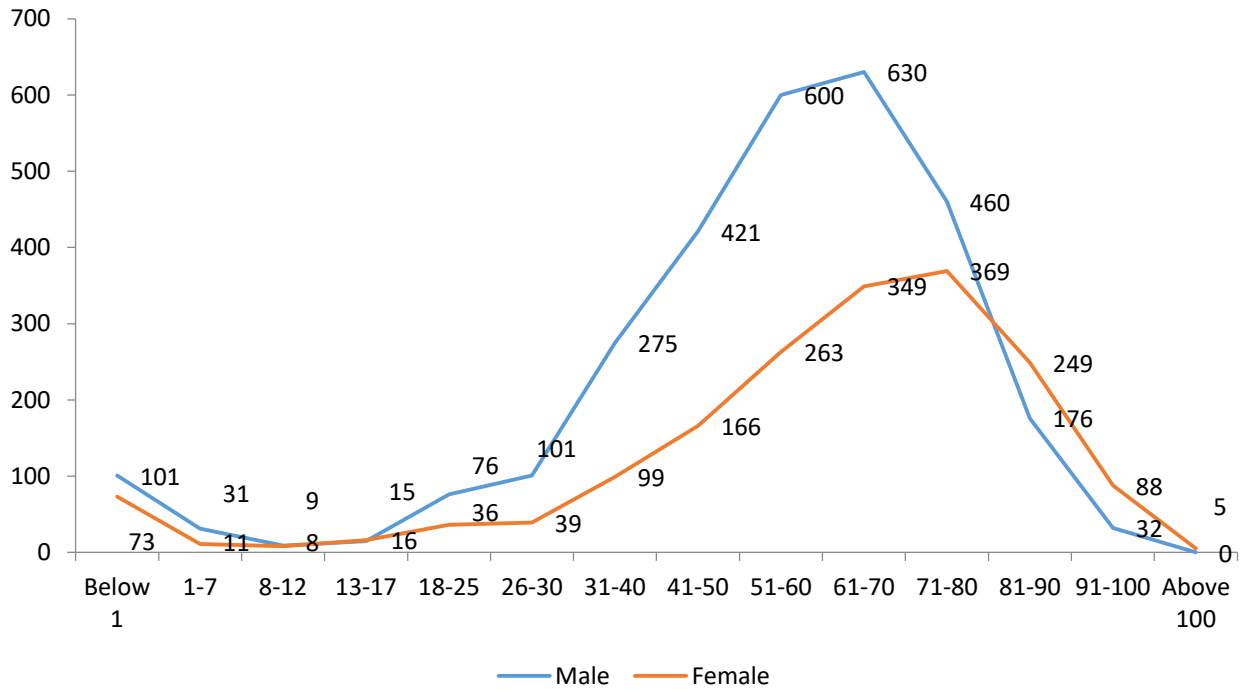


Figure 19.0 Death by Age Group

Age Group	MALE	FEMALE	Count	%
Below 1	101	73	174	3.70
1-7	31	11	42	0.89
8-12	9	8	17	0.36
13-17	15	16	31	0.66
18-25	76	36	112	2.38
26-30	101	39	140	2.98
31-40	275	99	374	7.96
41-50	421	166	587	12.49
51-60	600	263	863	18.37
61-70	630	349	979	20.84
71-80	460	369	829	17.65
81-90	176	249	425	9.05
91-100	32	88	120	2.55
Above 100	0	5	5	0.11
<b>Total</b>	<b>2927</b>	<b>1771</b>	<b>4698</b>	<b>100%</b>

## 7. Death Registration disaggregated by Disposal

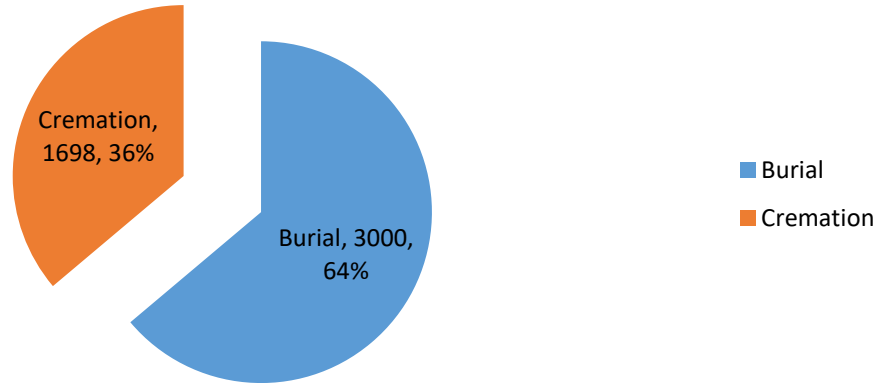


Figure 20.0 Death registration by disposal

Disposal	Count	%
Burial	3000	63.8569604
Cremation	1698	36.1430396
<b>Total</b>	<b>4698</b>	<b>100%</b>

## 8. Death Registration disaggregated by Permit Type

Burial/Transfer	Count	%
Burial	2593	55.1937
Transfer	2105	44.8063
<b>Total</b>	<b>4698</b>	<b>100%</b>

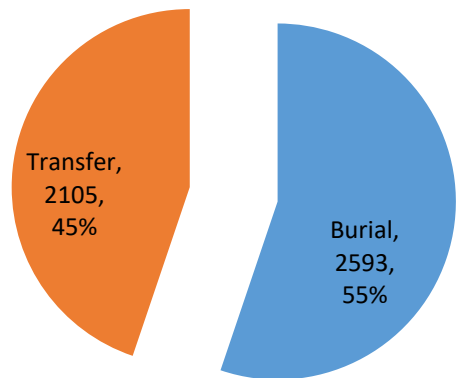


Figure 21.0 Death disaggregated by Permit type

## 9. Funeral Services Provider

Funeral Service	Count
Muntinlupa	2904
Outside Muntinlupa	1794
<b>Total</b>	<b>4698</b>

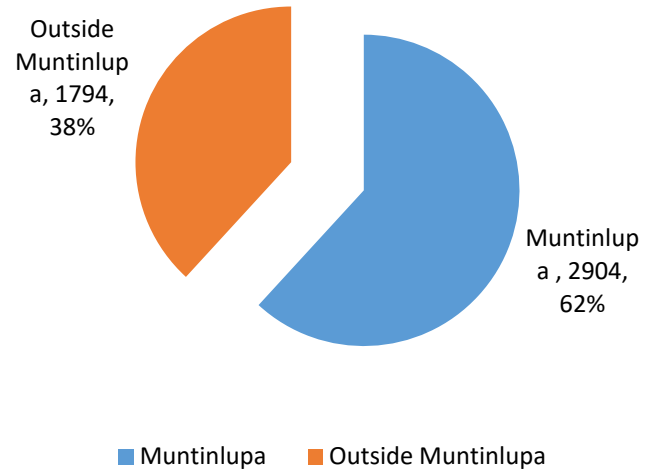
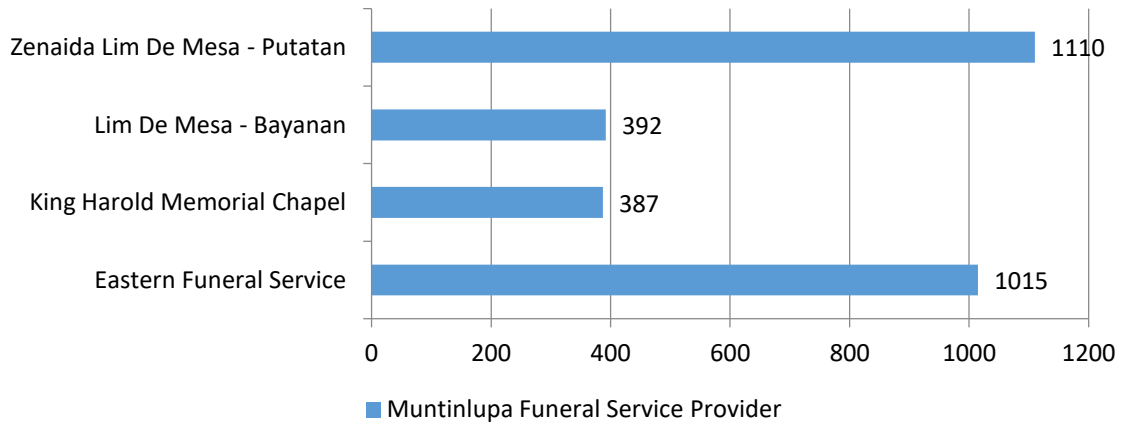


Figure 22.0 Funeral Service Provider

### Muntinlupa Funeral Service Provider



Funeral Service	Count
Eastern Funeral Service	1015
King Harold Memorial Chapel	387
Lim De Mesa - Bayanan	392
Zenaida Lim De Mesa - Putatan	1110
<b>Total</b>	<b>2904</b>

**14. Comparative Trend Data on Death Registration disaggregated by Gender from previous 5 years (2017 to 2021)**

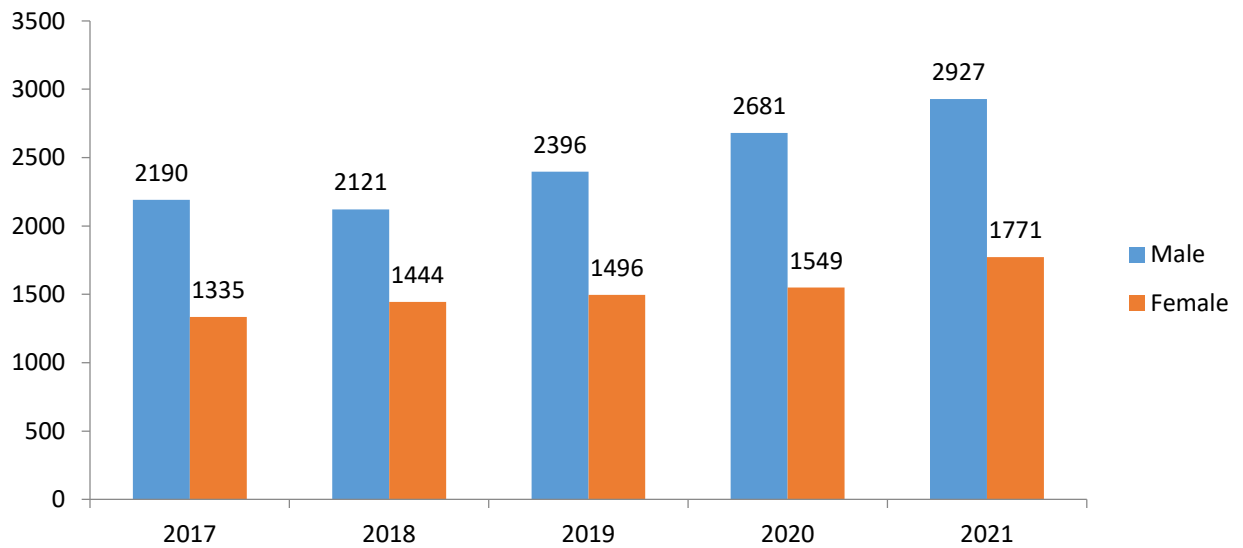


Figure 23.0 Death Registration from 2017 to 2022

Year	Male	Female	Count
2017	2190	1335	3525
2018	2121	1444	3565
2019	2396	1496	3892
2020	2681	1549	4230
2021	2927	1771	4698
<b>Total</b>	<b>12315</b>	<b>7595</b>	<b>19910</b>

# CERTIFICATE OF MARRIAGE REGISTRATION

---

## 1. Marriage Registration disaggregated by Month

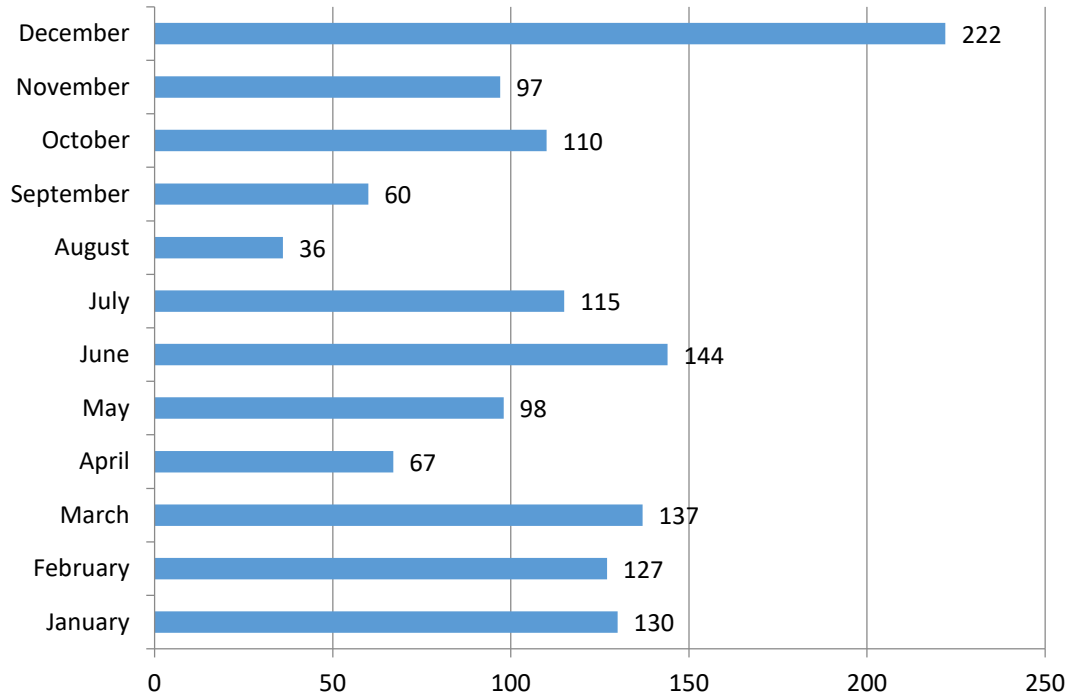


Figure 24.0 Marriage by Month

Month	Count
January	130
February	127
March	137
April	67
May	98
June	144
July	115
August	36
September	60
October	110
November	97
December	222
<b>Total</b>	<b>1343</b>

## 2. Marriage Registration disaggregated by Registration Status

Registration Status	Count
Timely	1327
Delayed	16
<b>Total</b>	<b>1343</b>

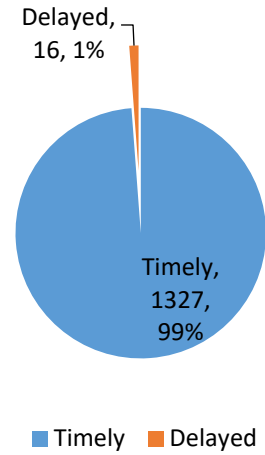


Figure 25.0 Marriage by Registration Status

## 3. Marriage Registration disaggregated by Solemnizing officer certification

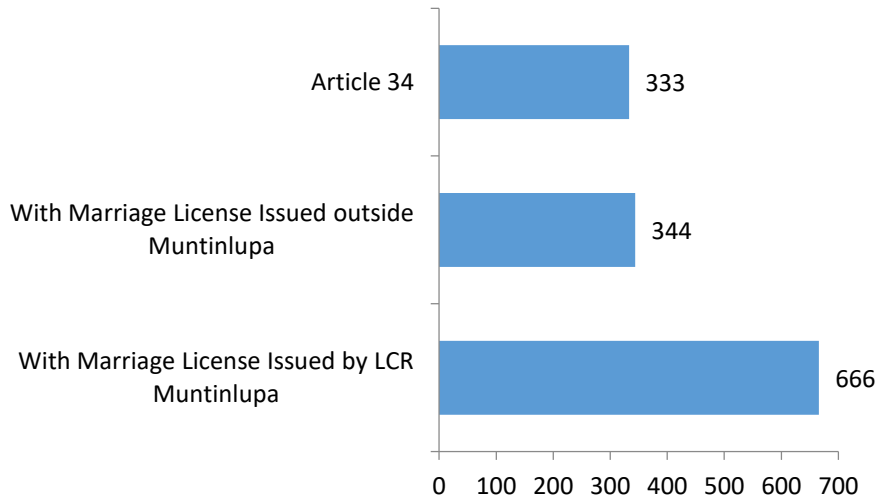


Figure 26.0 Marriage by Solemnizing officer certification

Solemnizing Officer Certification	Count
With Marriage License Issued by LCR Muntinlupa	666
With Marriage License Issued outside Muntinlupa	344
Article 34	333
<b>Total</b>	<b>1343</b>

#### 4. Marriage Registration by Place of Wedding

Place of Wedding	Count
Church Wedding	676
Civil Wedding	286
Others (Garden, Hotel, Restaurant, Etc..)	381
<b>Total</b>	<b>1343</b>

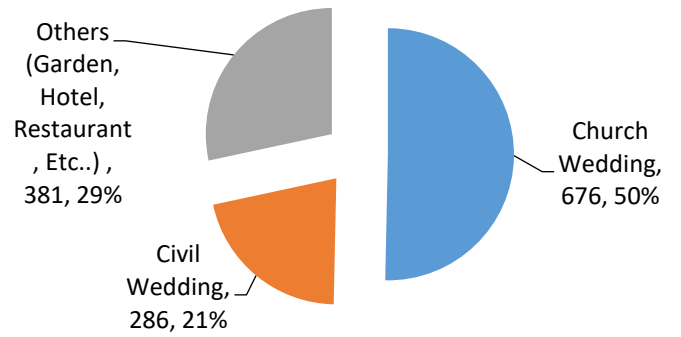
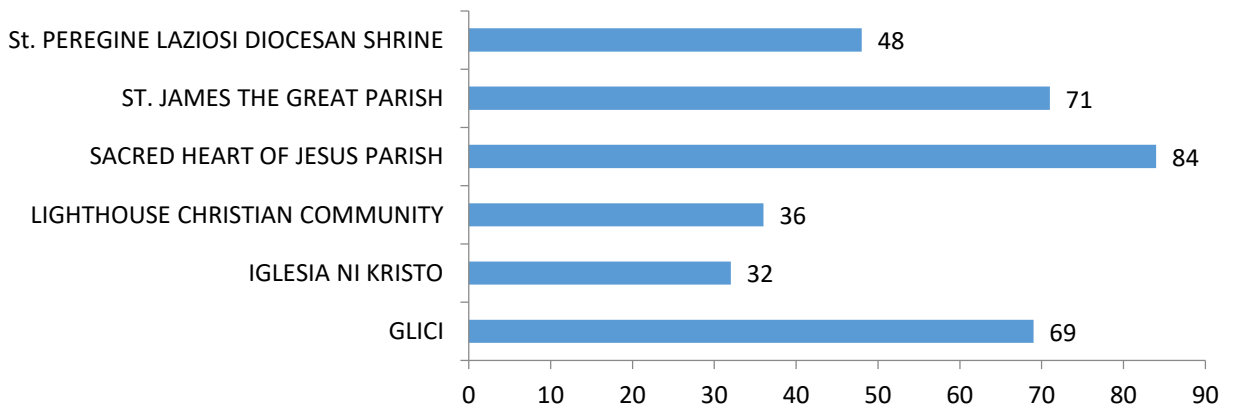


Figure 27.0 Marriage by Place of Wedding

#### TOP CHURCH PLACE OF WEDDING



Wedding Place*	Count
GLICI	69
IGLESIA NI KRISTO	32
LIGHTHOUSE CHRISTIAN COMMUNITY	36
SACRED HEART OF JESUS PARISH	84
ST. JAMES THE GREAT PARISH	71
St. PEREGINE LAZIOSI DIOCESAN SHRINE	48
<b>Total</b>	<b>340</b>

Note:  
\* The Data Posted are based on initial encoding

## 5. Marriage Registration disaggregated by AGE of Contracting Party

### MALE AGE GROUP

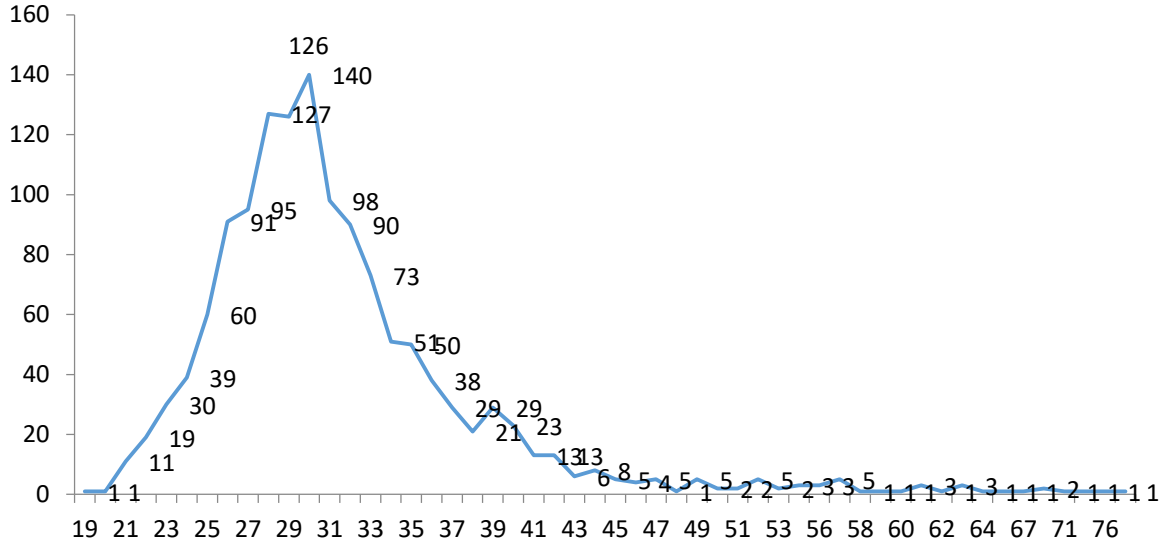


Figure 28.0 Marrying Age of Male

AGE	Count	AGE	Count	AGE	Count
19	1	37	29	56	3
20	1	38	21	57	5
21	11	39	29	58	1
22	19	40	23	59	1
23	30	41	13	60	1
24	39	42	13	61	3
25	60	43	6	62	1
26	91	44	8	63	3
27	95	45	5	64	1
28	127	46	4	65	1
29	126	47	5	67	1
30	140	48	1	68	2
31	98	49	5	71	1
32	90	50	2	74	1
33	73	51	2	76	1
34	51	52	5	79	1
35	50	53	2		
36	38	54	3		



## FEMALE AGE GROUP

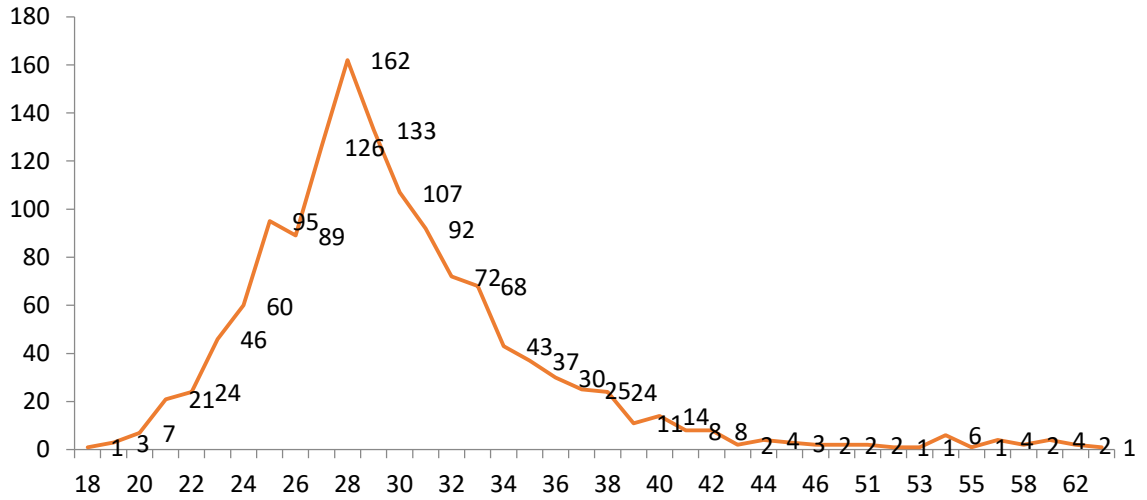


Figure 29.0 Marrying Age of Female

AGE	Count	AGE	Count	AGE	Count
18	1	36	30	58	2
19	3	37	25	59	4
20	7	38	24	62	2
21	21	39	11	66	1
22	24	40	14		
23	46	41	8		
24	60	42	8		
25	95	43	2		
26	89	44	4		
27	126	45	3		
28	162	46	2		
29	133	48	2		
30	107	51	2		
31	92	52	1		
32	72	53	1		
33	68	54	6		
34	43	55	1		
35	37	57	4		

## 6. Marriage Registration disaggregated by Residency

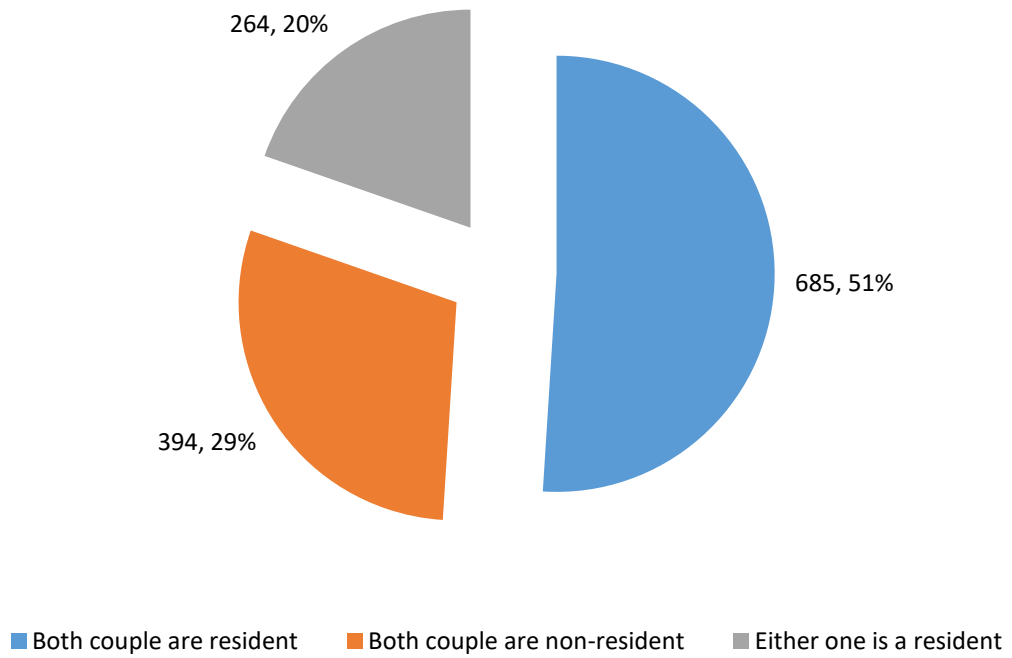


Figure 30.0 Marriage by residency

Residency	Count
Both couple are resident	685
Both couple are non-resident	394
Either one is a resident	264
<b>Total</b>	<b>1343</b>

## 7. Marriage Registration disaggregated by Barangay

### Groom's Barangay Residency

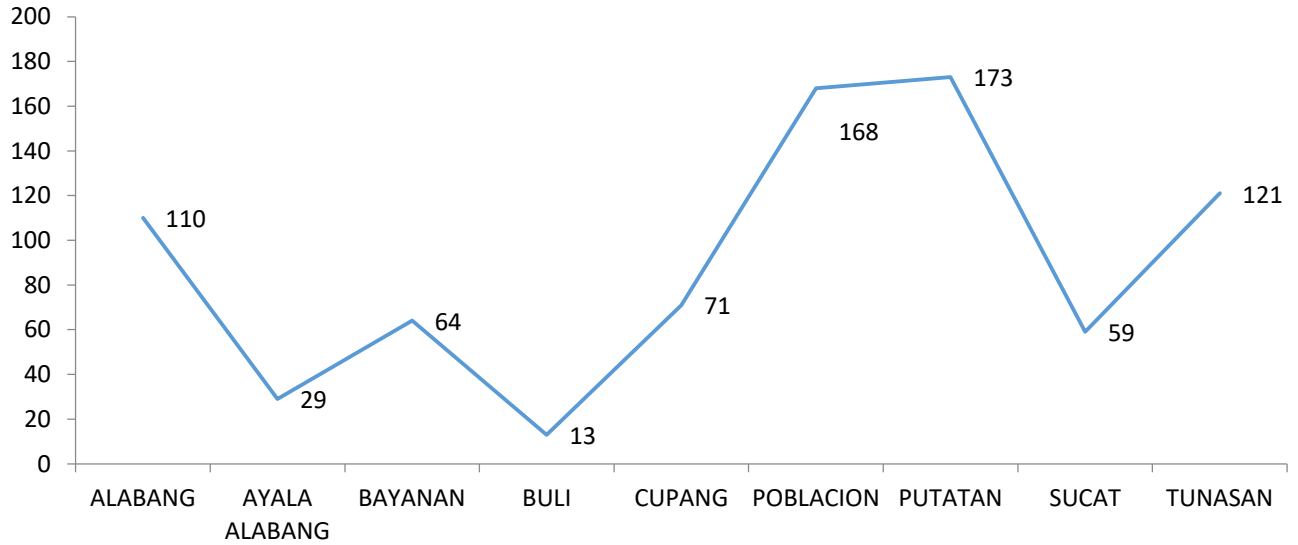


Figure 31. Groom's barangay residency

Barangay	Count
ALABANG	110
AYALA ALABANG	29
BAYANAN	64
BULI	13
CUPANG	71
POBLACION	168
PUTATAN	173
SUCAT	59
TUNASAN	121
NON-RESIDENT	535
<b>Total</b>	<b>1343</b>

## Bride's Barangay Residency

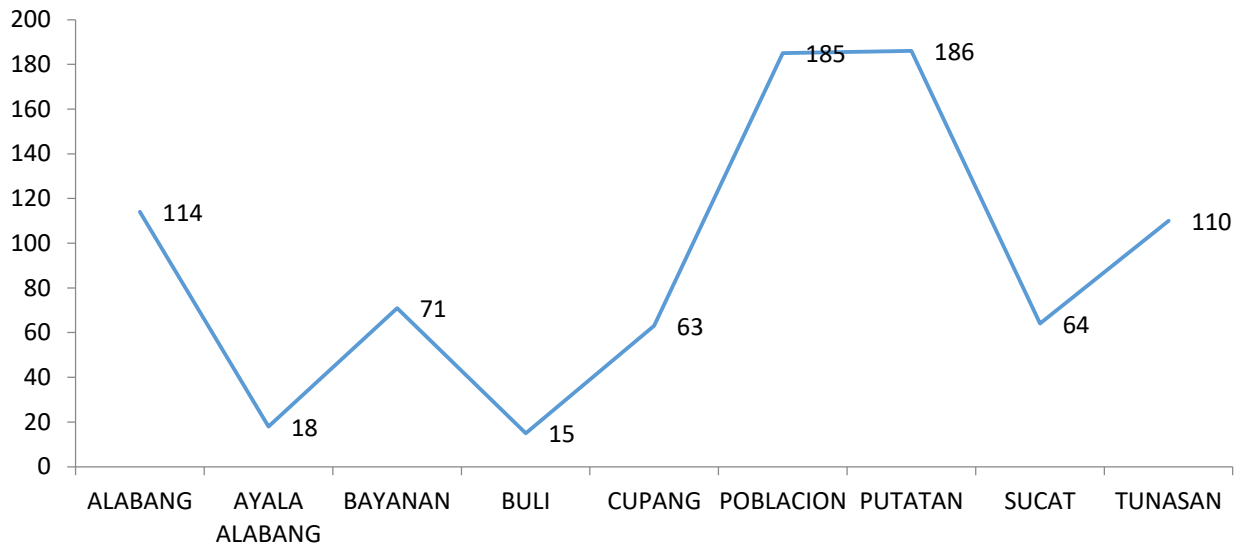


Figure 32.0 Bride's barangay residency

Barangay	Count
ALABANG	114
AYALA ALABANG	18
BAYANAN	71
BULI	15
CUPANG	63
POBLACION	185
PUTATAN	186
SUCAT	64
TUNASAN	110
NON-RESIDENT	517
<b>Total</b>	<b>1343</b>

## 8. Comparative Trend data on Marriage Registration from 2017 to 2021

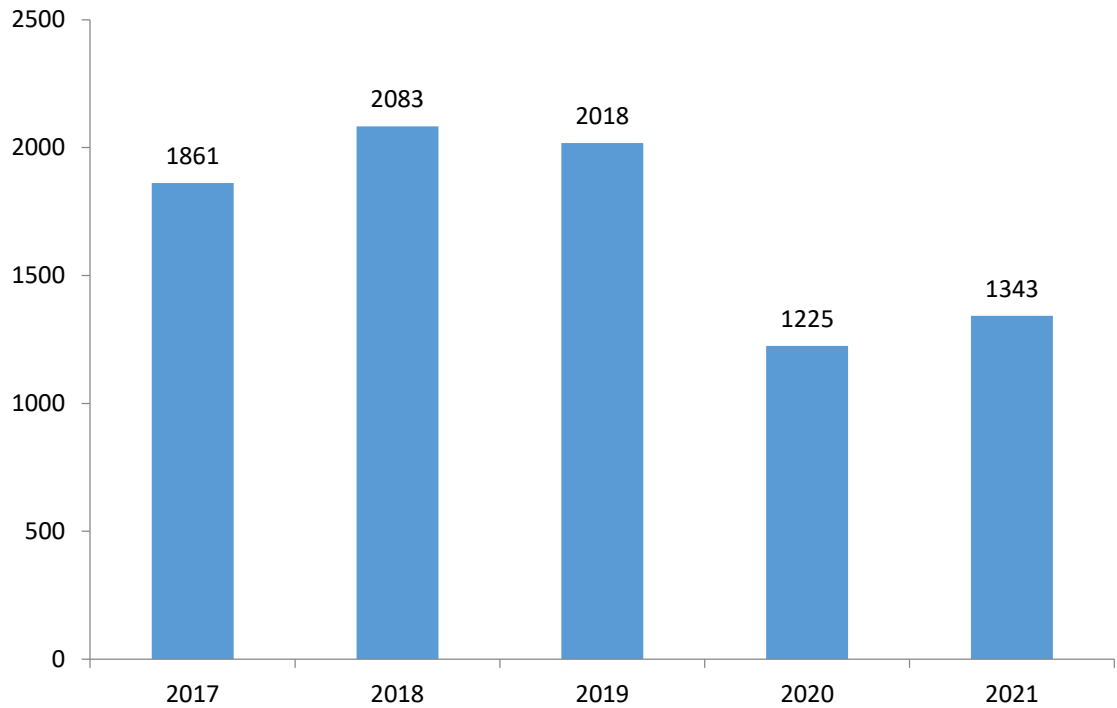


Figure 33.0 Marriage Registration from 2017 to 2021

Year	Count
2017	1861
2018	2083
2019	2018
2020	1225
2021	1343
<b>Total</b>	<b>8530</b>