

2018 CIVIL REGISTRATION REPORT

BIRTH

Birth Registration by Registration Status

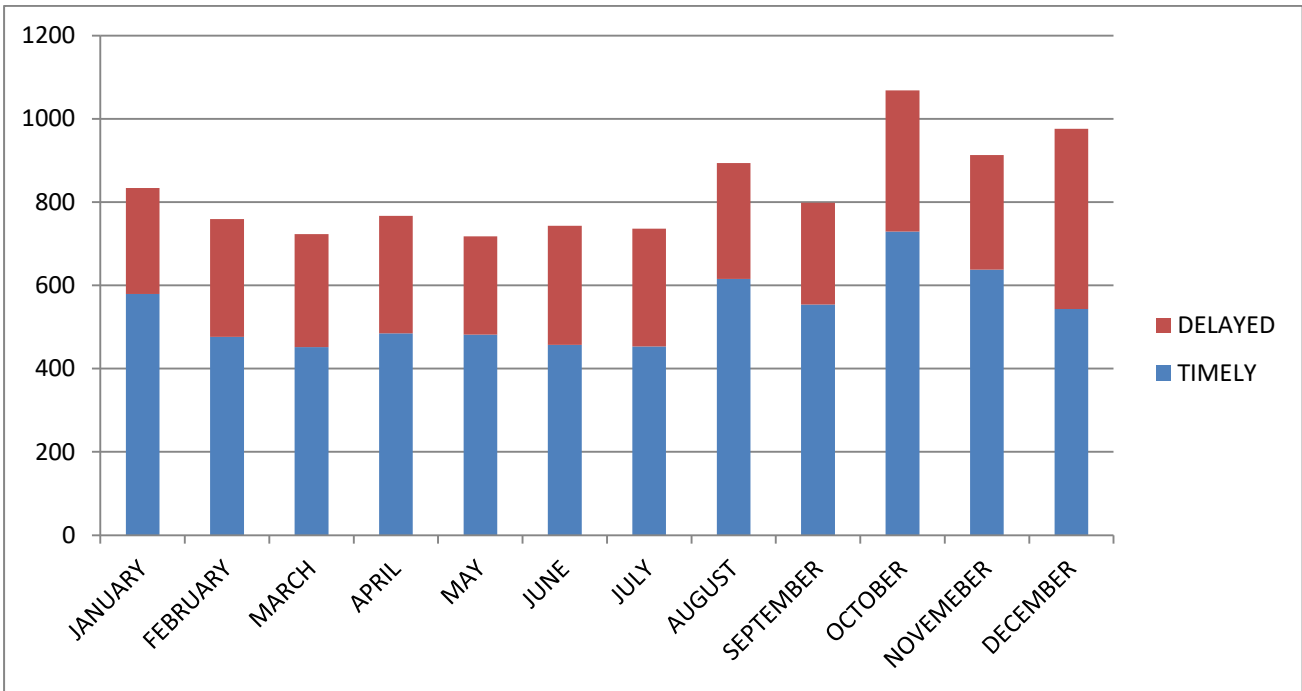


Figure 1: Monthly Birth registrations for year 2018 by status

MONTH	TIMELY	DELAYED	COUNT
JANUARY	579	255	834
FEBRUARY	476	283	759
MARCH	452	271	723
APRIL	485	282	767
MAY	482	236	718
JUNE	457	286	743
JULY	453	283	736
AUGUST	615	279	894
SEPTEMBER	554	244	798
OCTOBER	729	339	1,068
NOVEMBER	638	275	913
DECEMBER	543	433	976
TOTAL	6463	3466	9,929

Table 1.1 Registration by status

Note: status – Timely Registrations are birth registrations within 30 days of reglementary period from the date of Birth; Delayed – beyond reglementary period.

Birth Registration by Gender

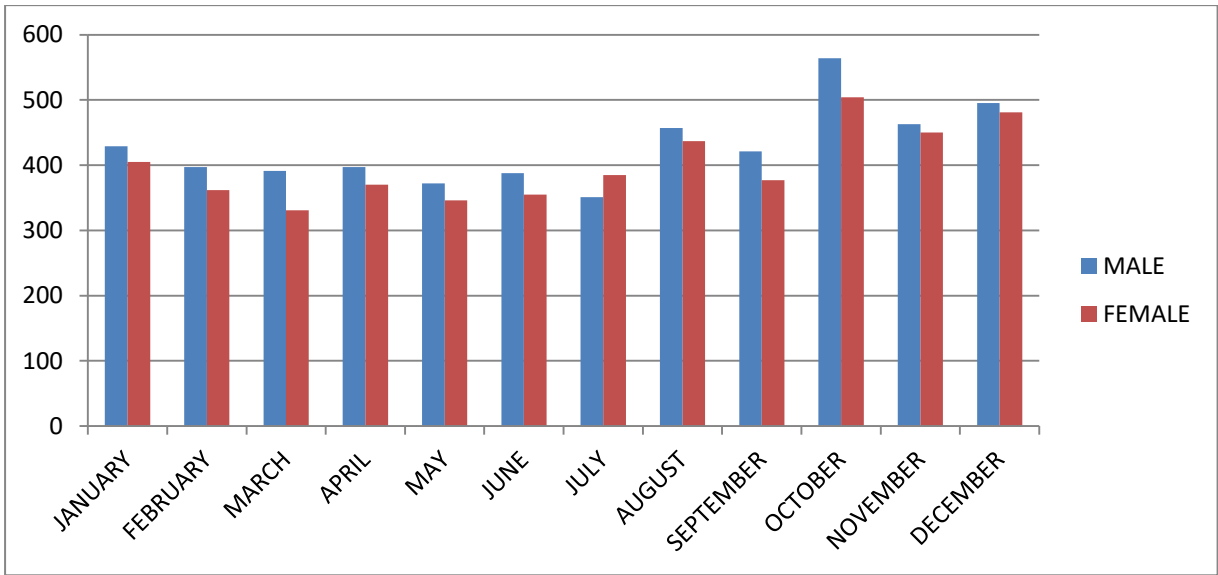


Figure 2: Monthly Birth registrations for year 2018 by gender

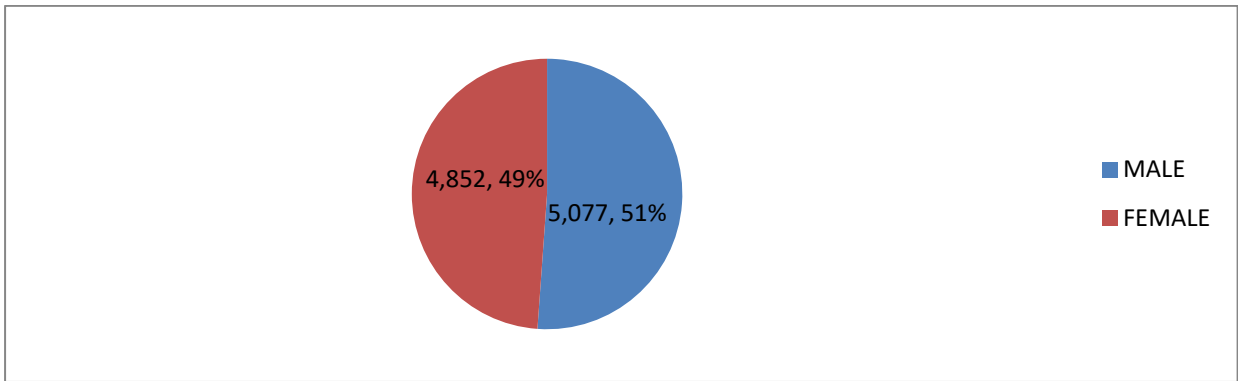


Figure 3: Summary of Birth Registration for year 2018 by Gender

MONTH	MALE	FEMALE	COUNT
JANUARY	429	405	834
FEBRUARY	397	362	759
MARCH	391	331	723
APRIL	397	370	767
MAY	372	346	718
JUNE	388	355	743
JULY	351	385	736
AUGUST	457	437	894
SEPTEMBER	421	377	798
OCTOBER	564	504	1,068
NOVEMBER	463	450	913
DECEMBER	495	481	976
TOTAL	5,077	4,852	9,929

Table 1.2 Registrations by Gender

Registration by Marriage status of parents

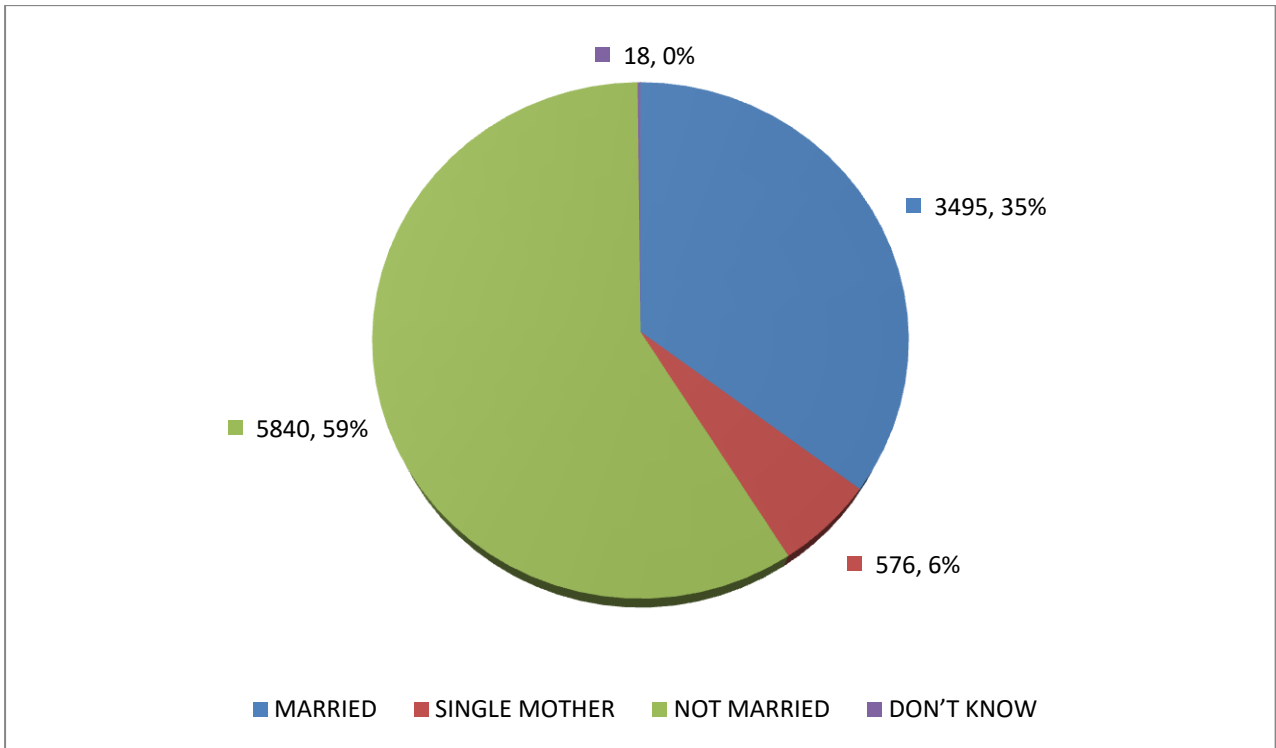


Figure 4: Summary of Birth Registration for year 2018 by Marriage Status

MARRIAGE STATUS OF PARENTS	COUNT
MARRIED	3495
SINGLE MOTHER	576
NOT MARRIED	5840
DON'T KNOW*	18
TOTAL	9929

Table 1.3 Registrations by Marriage Status of Parent

Note: *Don't Know status – are delayed registration of birth whose marriage status of parent is unknown. Usual date of birth is below year 1950.

DEATH

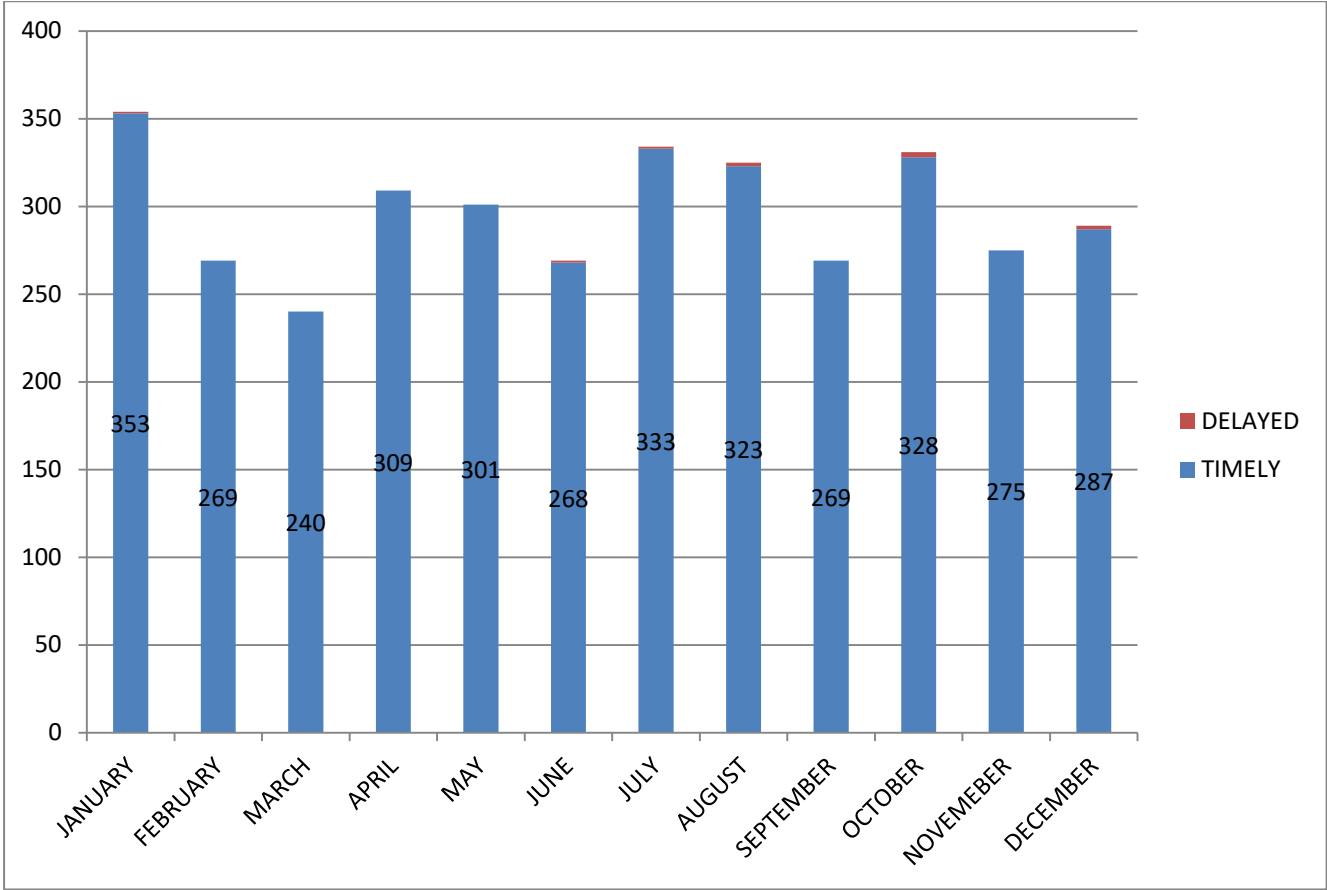


Figure 5: Monthly Death Registrations for year 2018 by status

MONTH	TIMELY	DELAYED	COUNT
JANUARY	353	1	354
FEBRUARY	269	0	269
MARCH	240	0	240
APRIL	309	0	309
MAY	301	0	301
JUNE	268	1	269
JULY	333	1	334
AUGUST	323	2	325
SEPTEMBER	269	0	269
OCTOBER	328	3	331
NOVEMBER	275	0	275
DECEMBER	287	2	289
TOTAL	3555	10	3565

Table 2.1 Registration by status

Note: status – Timely Registrations are birth registrations within 30 days of reglementary period from the date of Birth; Delayed – beyond reglementary period.

MARRAIGE

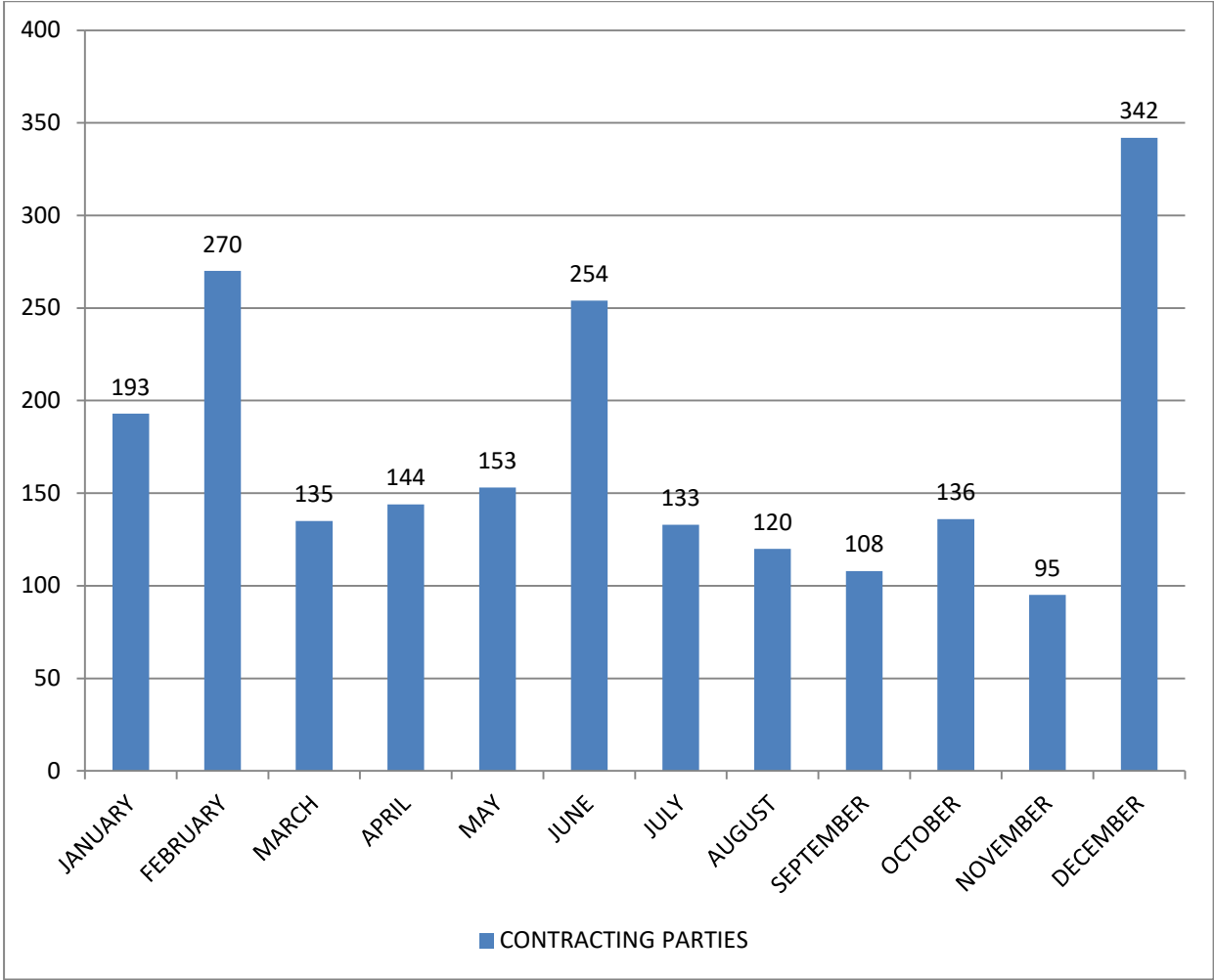


Figure 6: Monthly Marriage registrations for year 2018

MONTH	CONTRACTING PARTIES
JANUARY	193
FEBRUARY	270
MARCH	135
APRIL	144
MAY	153
JUNE	254
JULY	133
AUGUST	120
SEPTEMBER	108
OCTOBER	136
NOVEMBER	95
DECEMBER	342
TOTAL	2083

Table 3.1 Total Number of Registrations